



**Best Value. Best Velocity. Best Quality.**



Spring<sup>G3</sup>

# Durable Printing at its Best.

Spring<sup>G3</sup>

Industrial Narrow-Web digital printer.  
Ideal for short runs of labels, decals,  
membranes, license plates, traffic and  
other signs.



The **Spring<sup>3</sup>** is an industrial digital printer, delivering short runs of durable graphics at an extraordinary speed, with vivid colors. Ideal for labels, decals, membranes, license plates, traffic and other signs.

### Durable Printing at its Best.

#### Best Performance

- Printing speed of up to 270 m/hr (885 ft/hr)
- Up to 5 years outdoor durability
- Quick and simultaneous printing of up to 6 colors

#### Best Versatility

- Metallic, opaque white & vivid spot colors
- Supports a wide variety of off-the-shelf media
- Variable data capability

#### Best Usability

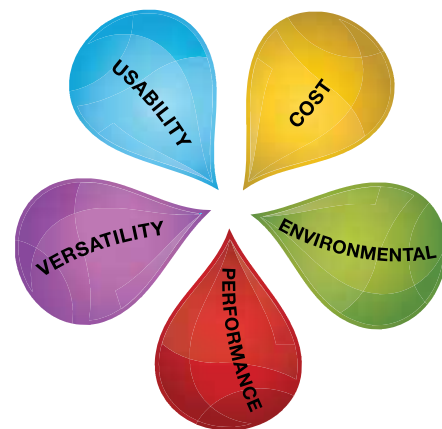
- User friendly & intuitive software
- No screens, no dies, no make-ready, no clean-up, no hassles

#### Best Environmentally Friendly Solution

- Solvent free. No odor or fumes
- Fit for office environment with 'green' dry inks
- Recyclable consumables
- Low power consumption

#### Best Cost of Ownership

- Quick ROI – print short run jobs at the cost of a screen set-up



#### Advantages of Spring<sup>3</sup> Dry Inks

- High durability
- Vivid spot colors including gold, silver, white & traffic colors
- Environment friendly inks
- No draining, no hazard and no fumes
- Fit for office environment

#### Advantages of Spring<sup>3</sup> Media

- Availability: Off-the-shelf media
- Flexibility
  - Vinyl, PVC, Polycarbonate (PC), Polyester (PET), Polypropylene (PP), Polyethylene (PE), Synthetic paper and others
  - Reflective, clear, metallic and window films
- Open System: Qualification available for technical support



#### Variable Data

Combine variable data into your graphics, including: numbers, names, text, pictures, barcodes and QR codes. For endless possible applications.



## Unique solutions for demanding applications

### Hazard, safety & compliance signs & labels

- Up to 5 years outdoor durability
- PMS color matching
- Vivid Spot colors with smooth and consistent coverage
- Abrasion resistant
- Crisp and sharp text (down to 2 point text)
- Quick ROI



### Product Identification, Labels for Dosing, Fleet Marking, Sports Decals & Marine Graphics

- Up to 5 years outdoor durability
- PMS color matching
- Vivid Spot colors including opaque, white and metallics
- Crisp and sharp text (down to 2 point text)
- Quick ROI



### Membrane Switch Overlays and Nameplates

- Over 2.5 million activations on Polyester (PET)
- Over 1 million activations on Polycarbonate (PC)
- Opaque white and silver backing
- Ink thickness as low as 2 microns
- No setup or recovery costs
- Abrasion durability and resistance for tough adhesives
- Quick ROI



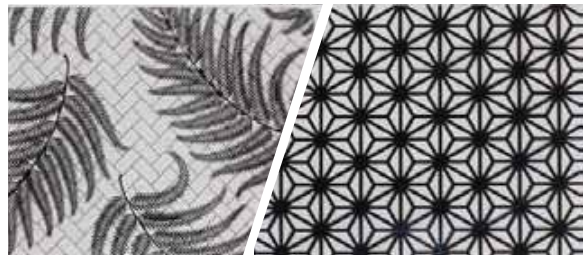
### Traffic, Way-finding Signage and License Plates

- Up to 12 years outdoor durability
- Traffic colors, including green, red, blue, yellow and brown
- No reflective film cutting shape
- Crisp and sharp text (down to 2 point text)
- Quick ROI



### Windows decoration

- Up to 5 years outdoor durability
- Variable information, short runs and customization
- Vivid Spot colors, metallics, opaque white
- Crisp and sharp text (down to 2 point text)
- Quick ROI



### Other applications

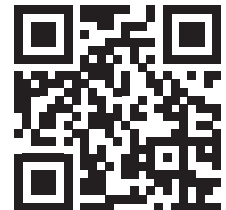
Any short run application that requires high durability, vivid spot colors and/or variable information: sports graphics, vehicle decals, such as marine graphics, motorcycles and small fleets, pipe markings and more.



<b>SprinG<sup>3</sup> Technical Specifications*</b>	
Printing Method	Thermal Transfer – Up to six colors in One Pass. (Traffic spot or process colors)
Printing Resolution*	1600 x 400, 1200 x 400, 800 x 400, 400 x 400, 200 x 400 dpi
Printing Speed (linear)**	Up to 270 m/hr (885 ft/hr)
RIP Software	Scanvec Amiable RIP® Software
Media Handling	Roll-to-Roll (3" or 6" core)
Media Width	Up to 320 mm (12.6")
Effective Print Width	307mm (12.08")
Media Roll Size	O.D. up to 500 mm (Ø 19.6"), 3" core
Ribbons length (consumables)	Up to 500 m (1640 foot) per roll
TCS (Temp. Control System)	Liquid temperature control system, ready to connect to chiller (not included).
Printer Dimensions (incl. feeder and collector)*	Net width 100 cm, Length 220 cm, Height 100 cm. (40" x 87" x 40").
Printer Weight*	Net: Approx. 500 kg (1,100 lbs) Gross: Approx. 680 kg (1,500 lbs)
Power Consumption	24 Amp. (Max)
Electrical Input	220/230 VAC, 50/60 Hz, Single Phase
Air Supply Requirements	Dry air 5.5 / 6.0 ATM/Bar, Flow rate 50 Ltr/min
Conformity	CE
Approval	UL

\* Specifications and product appearance are subject to change without prior notice.

\*\* Printing speed may vary (depending on chosen media, resolution and energy level).



**Arrow Systems, Inc. 2440 Jerauld Ave. Niagara Falls, NY 14305**  
**Phone: 716-285-2974 Toll Free: 888-697-2749 Fax: 716-285-5087**

website: [www.arrsys.com](http://www.arrsys.com)

email: [sales@arrsys.com](mailto:sales@arrsys.com)

Connect with us on...     